



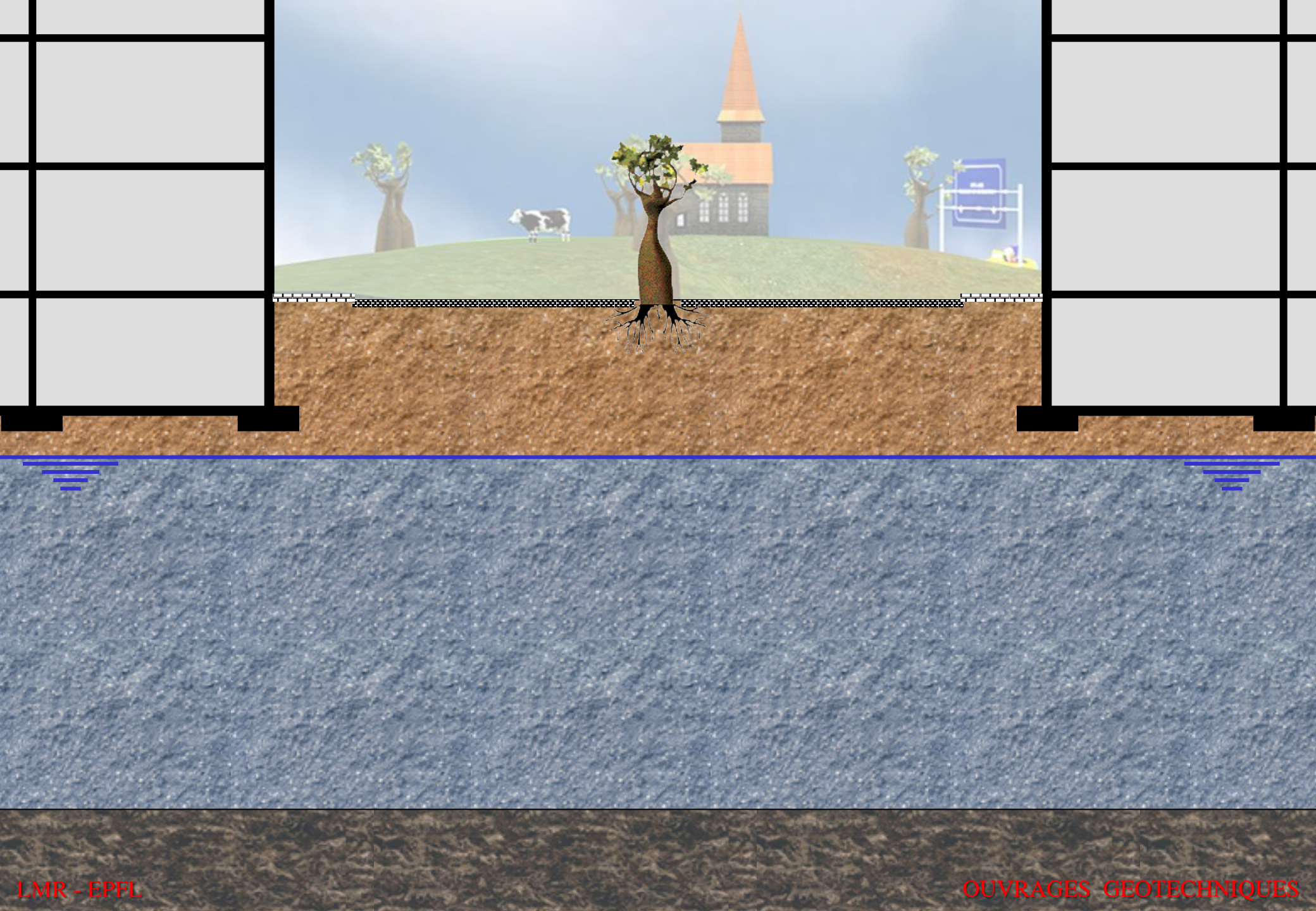
ÉCOLE POLYTECHNIQUE
FÉDÉRALE DE LAUSANNE

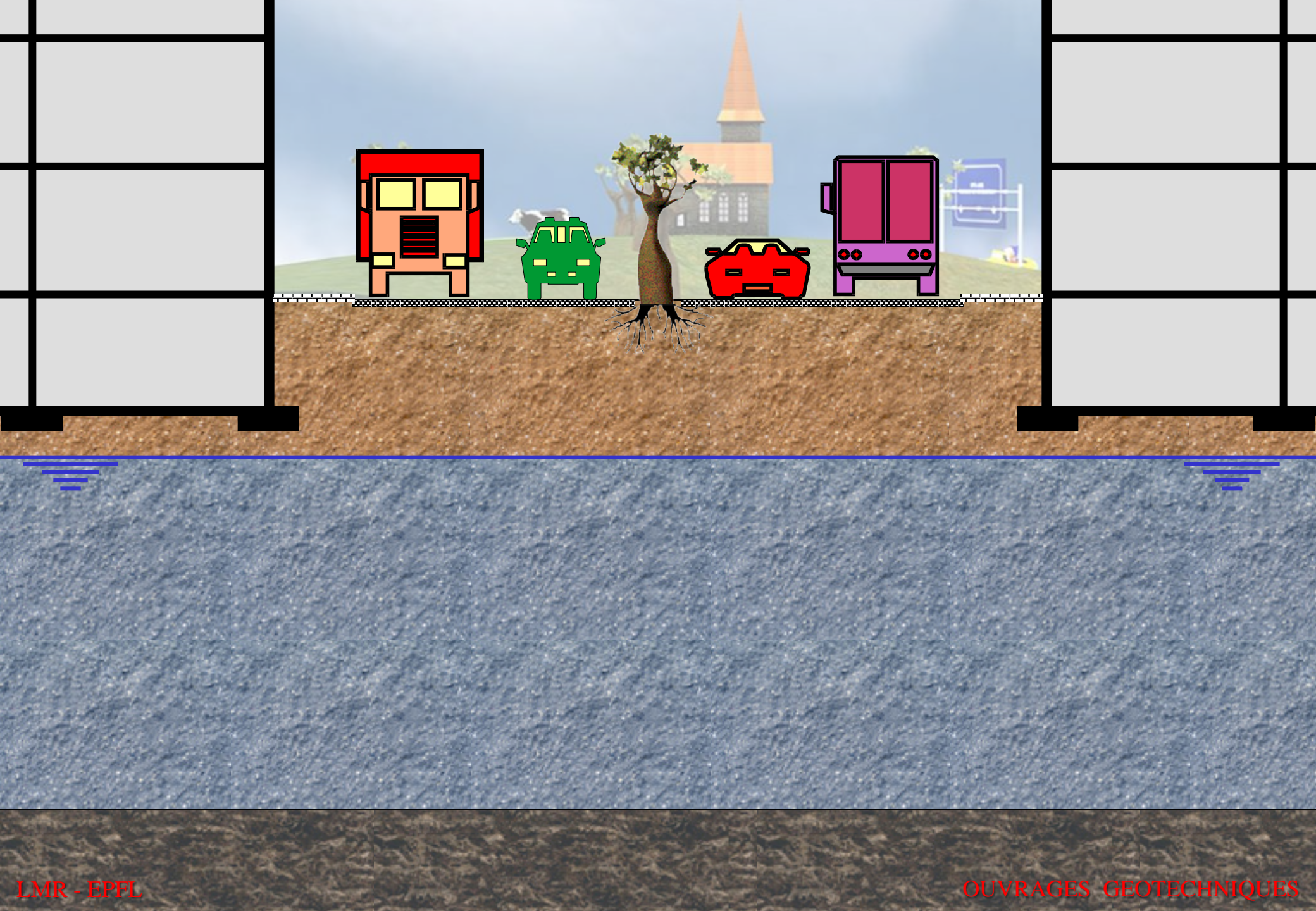
Exécution des tunnels en milieu urbain Méthode « en taupe » ou « top-down »

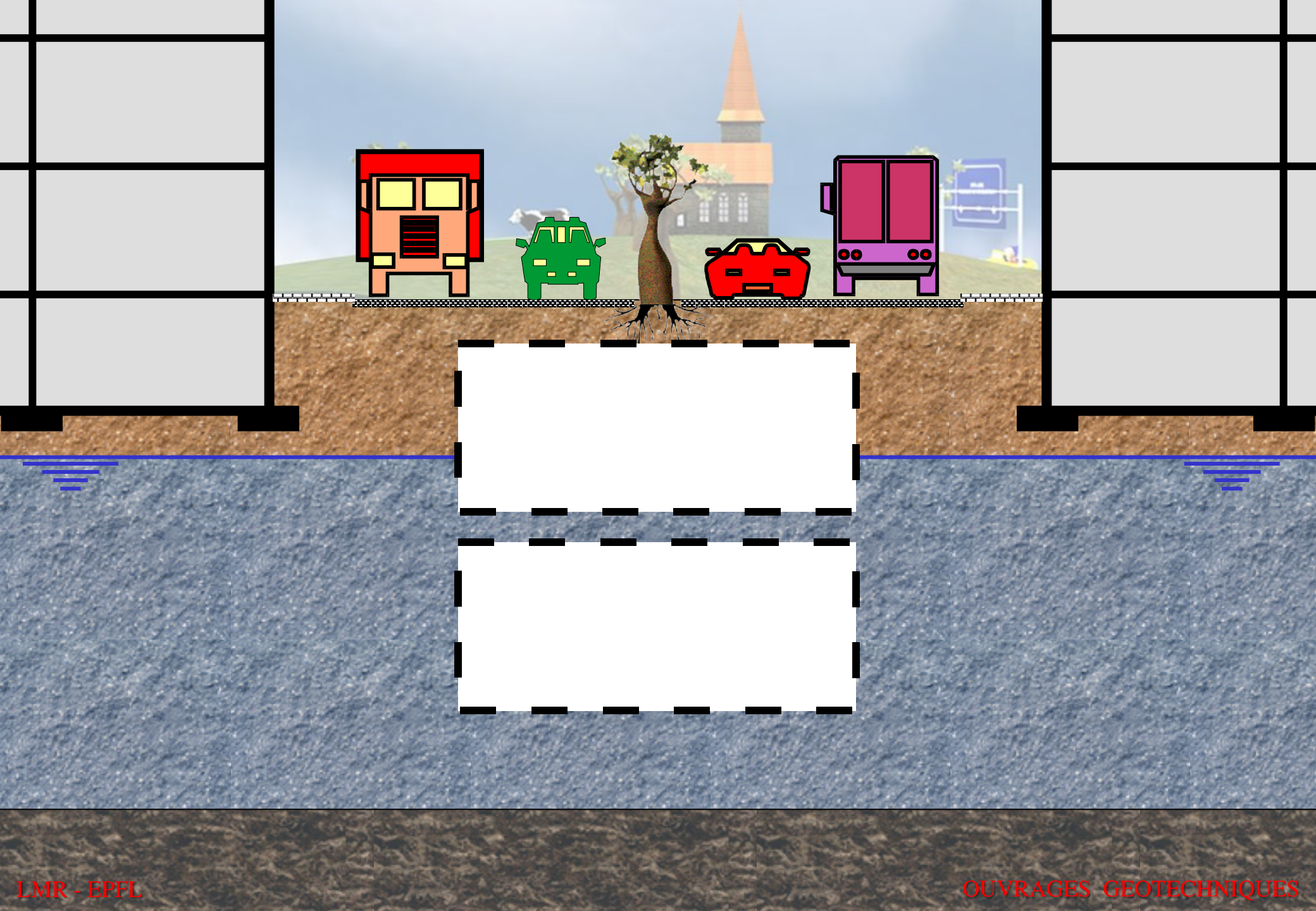
Ouvrages géotechniques

LMR

LABORATOIRE DE
MÉCANIQUE DES ROCHES

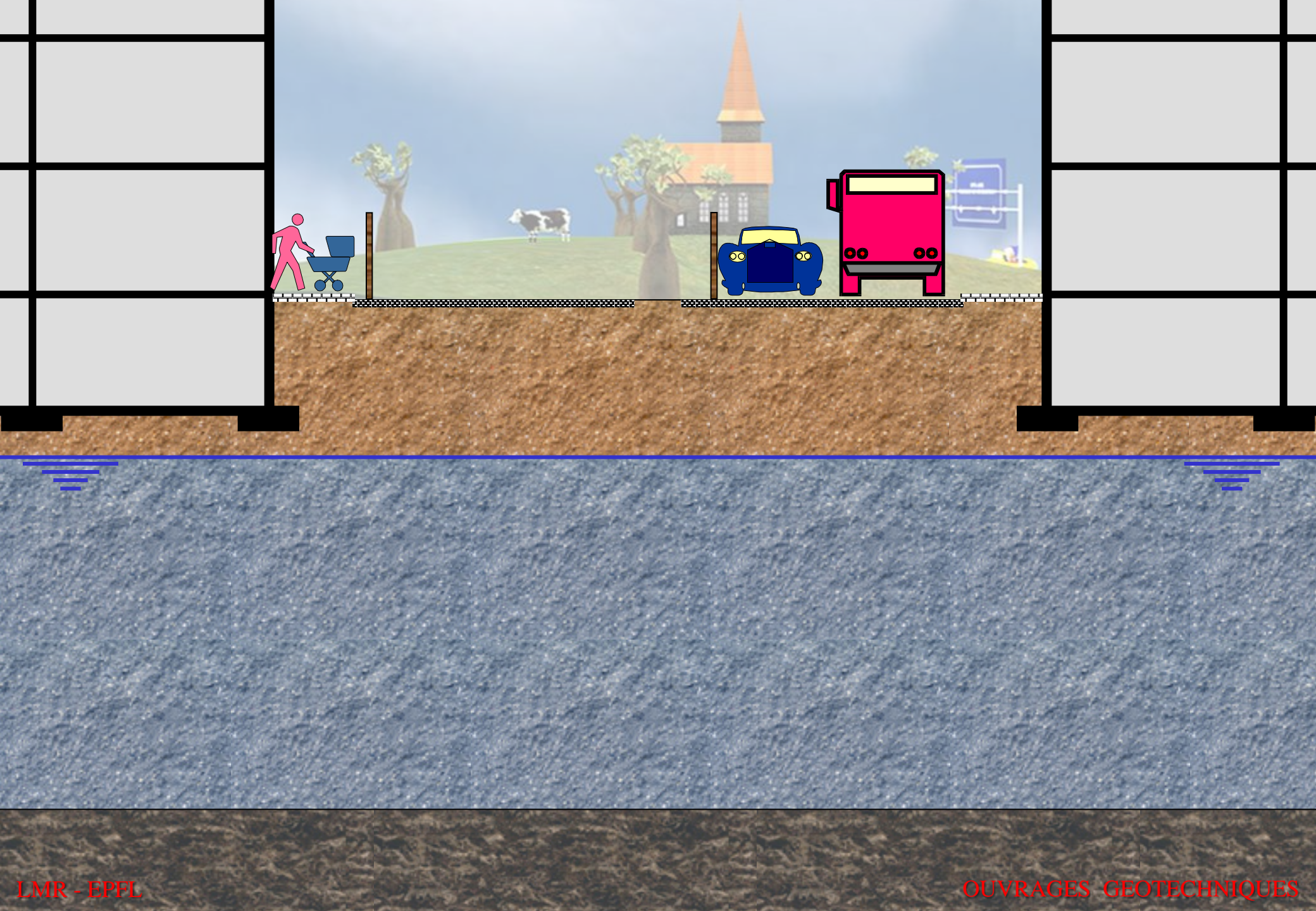


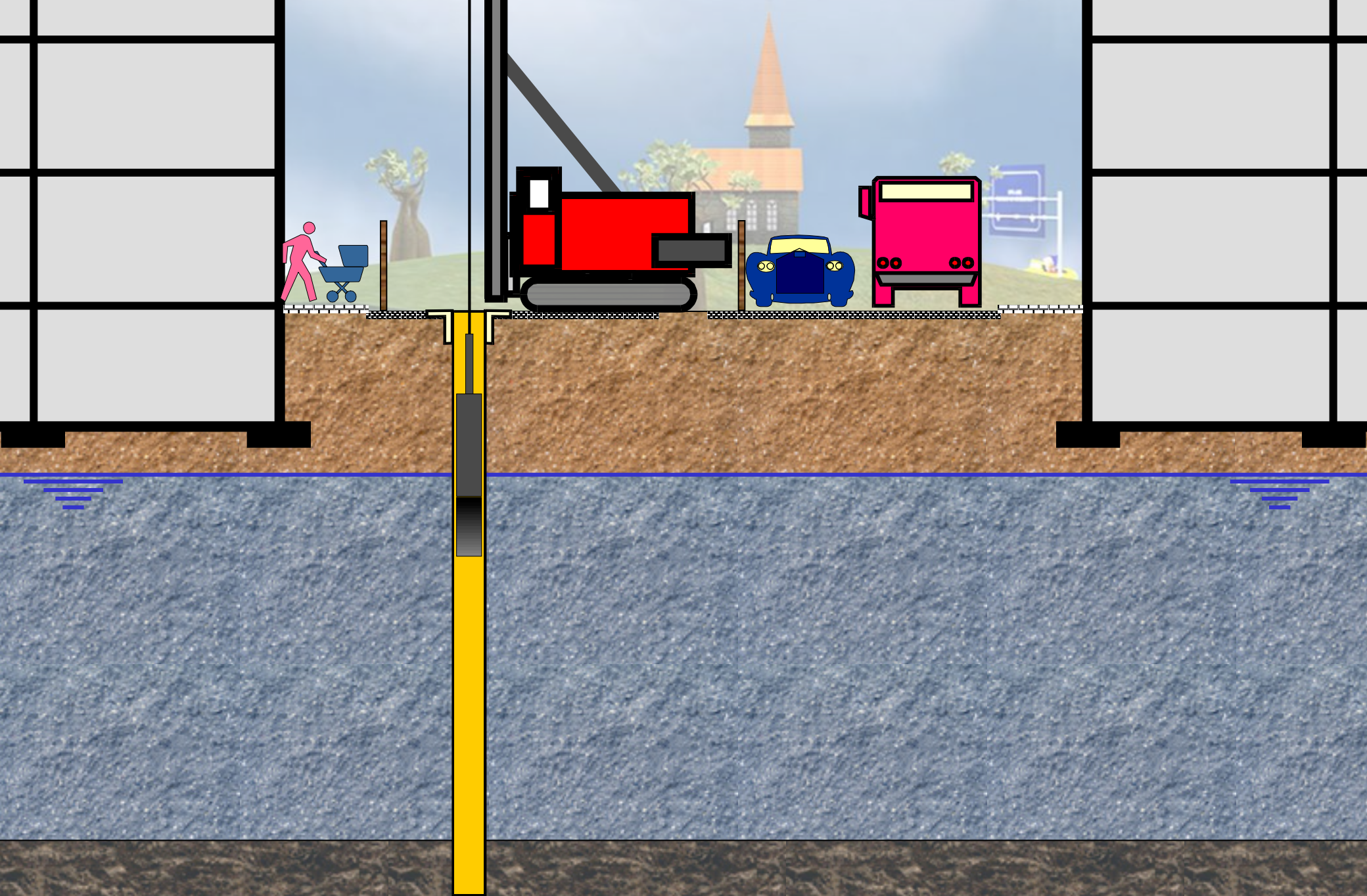


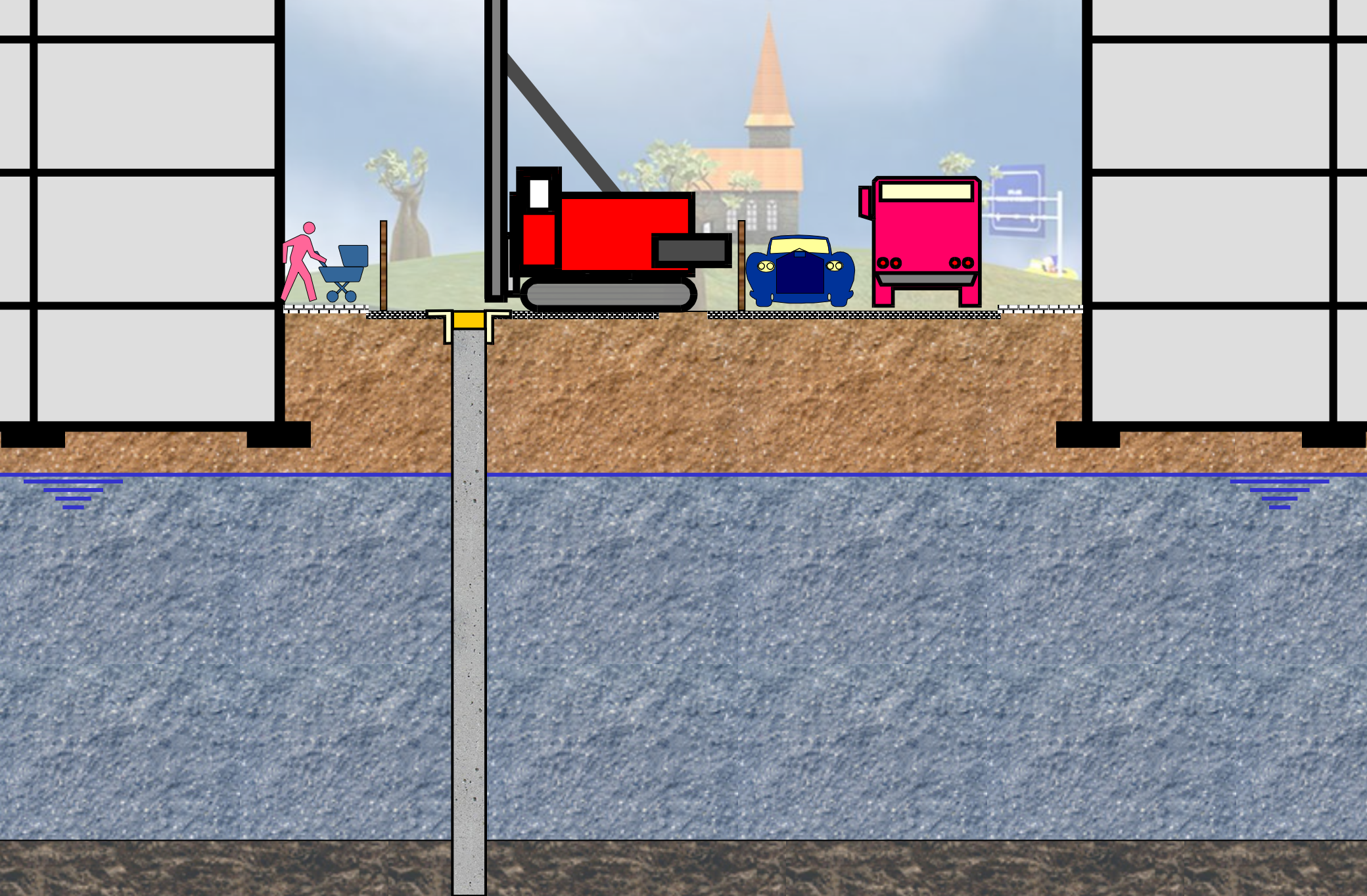


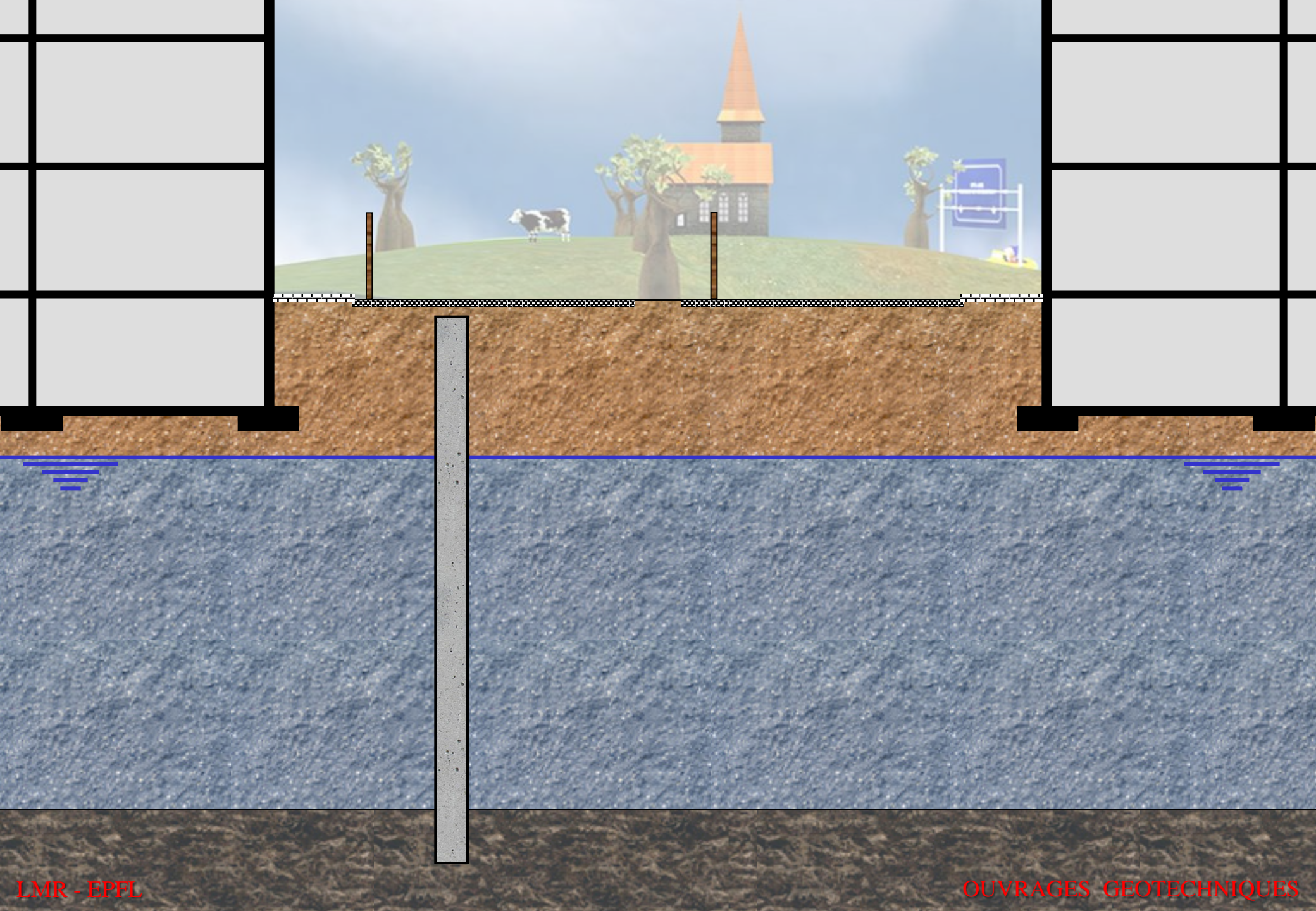


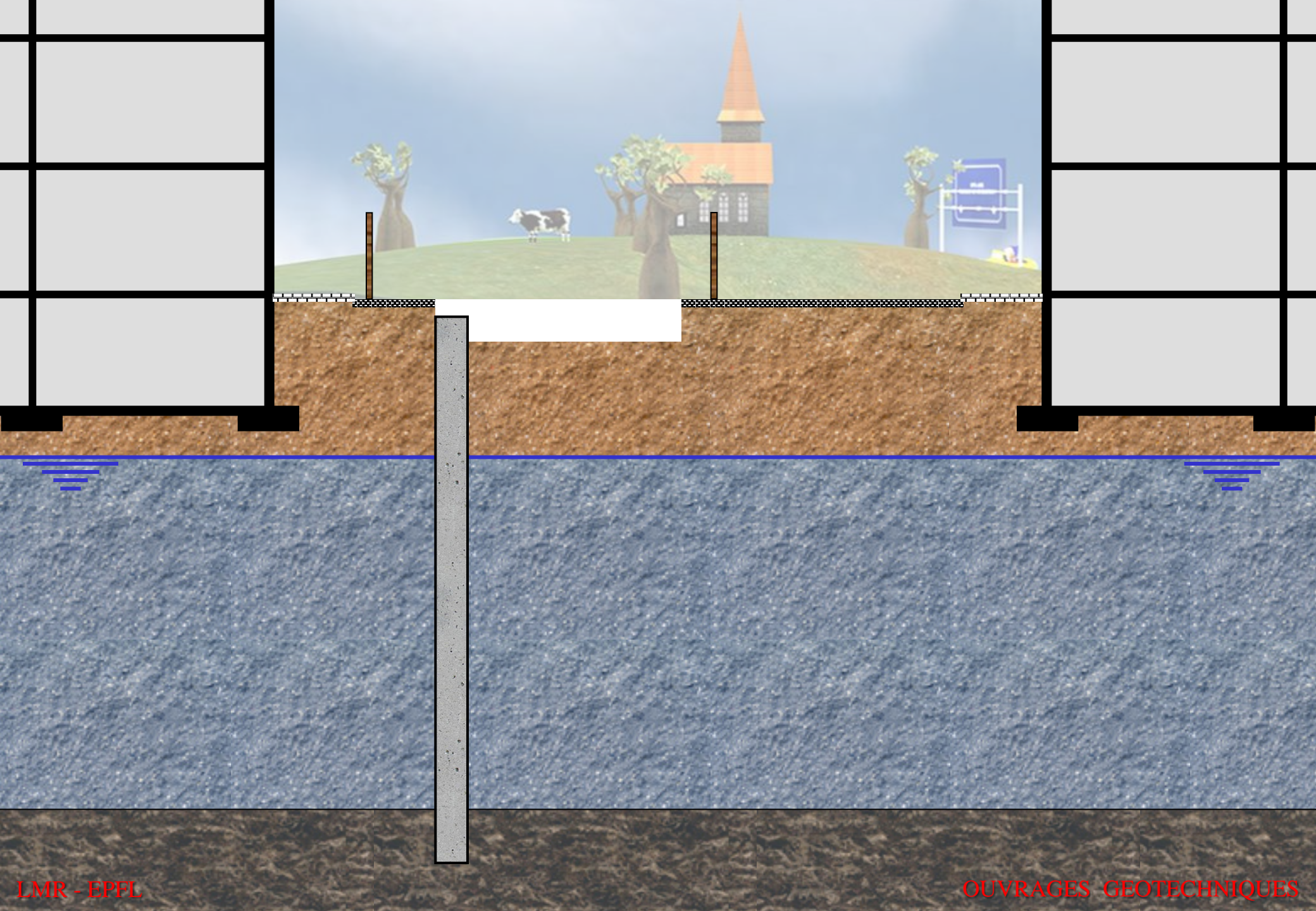
Les illustrations de cette
présentation sont
schématiques. En particulier,
elles ne respectent pas divers
détails et dimensions.

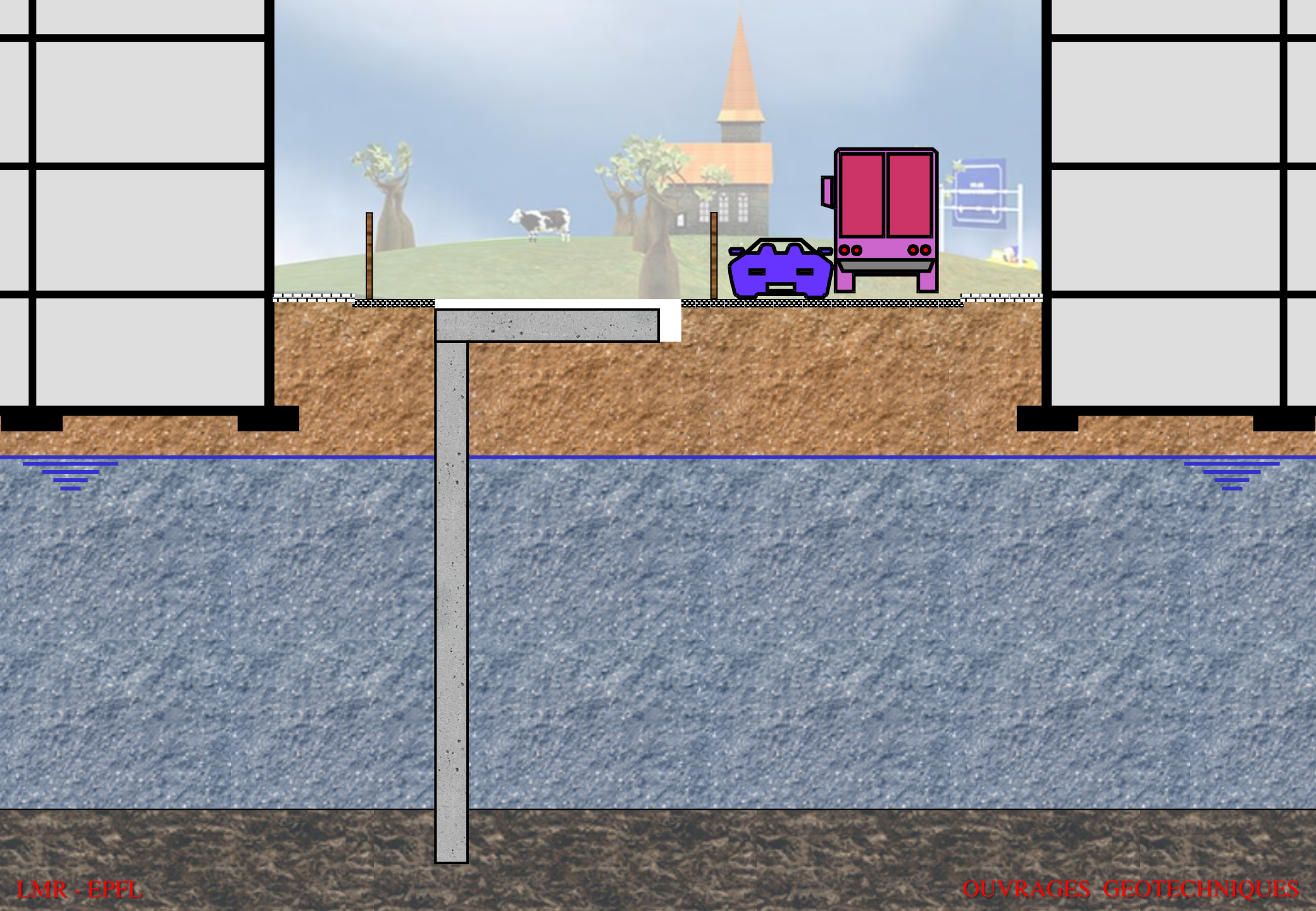


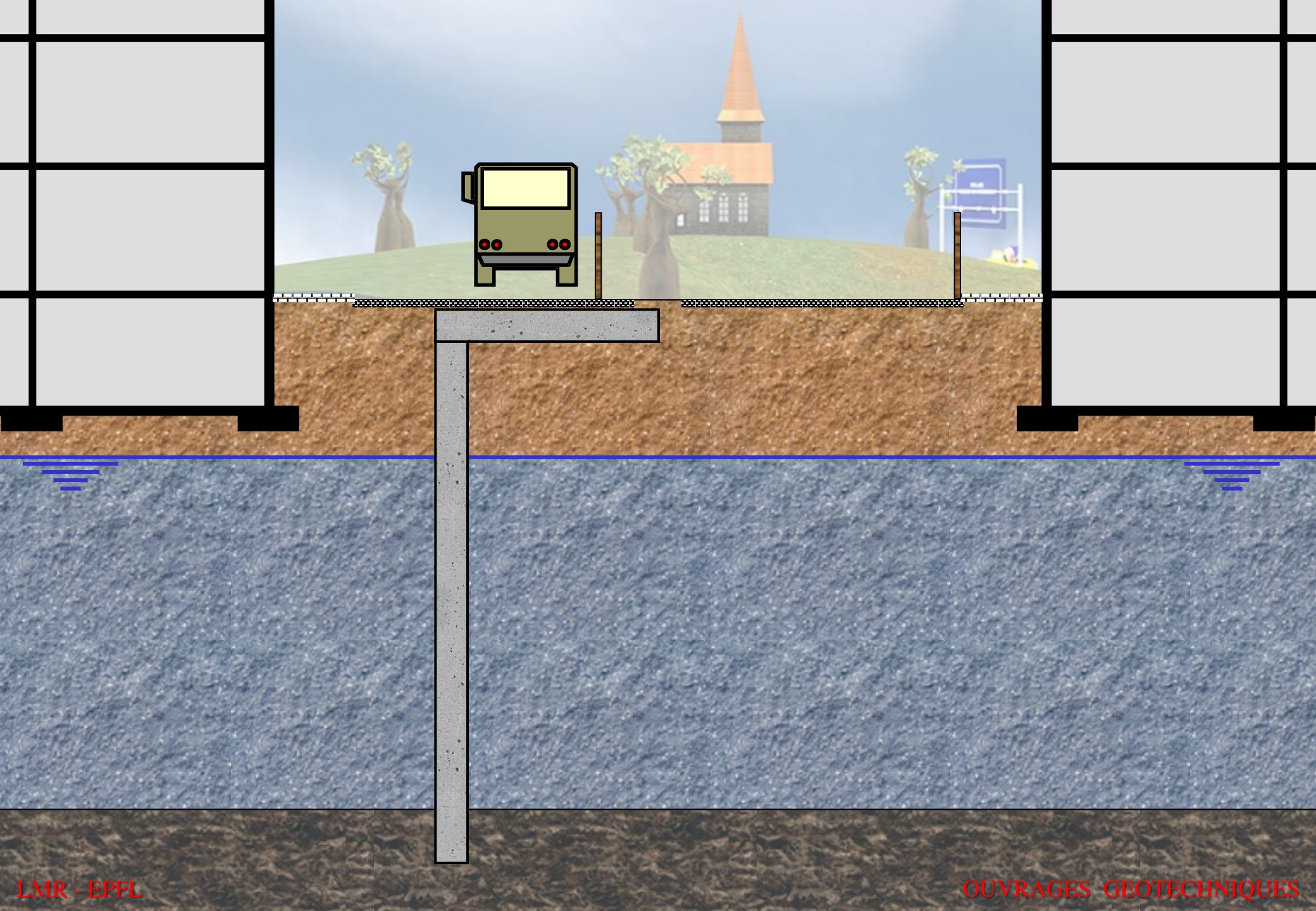


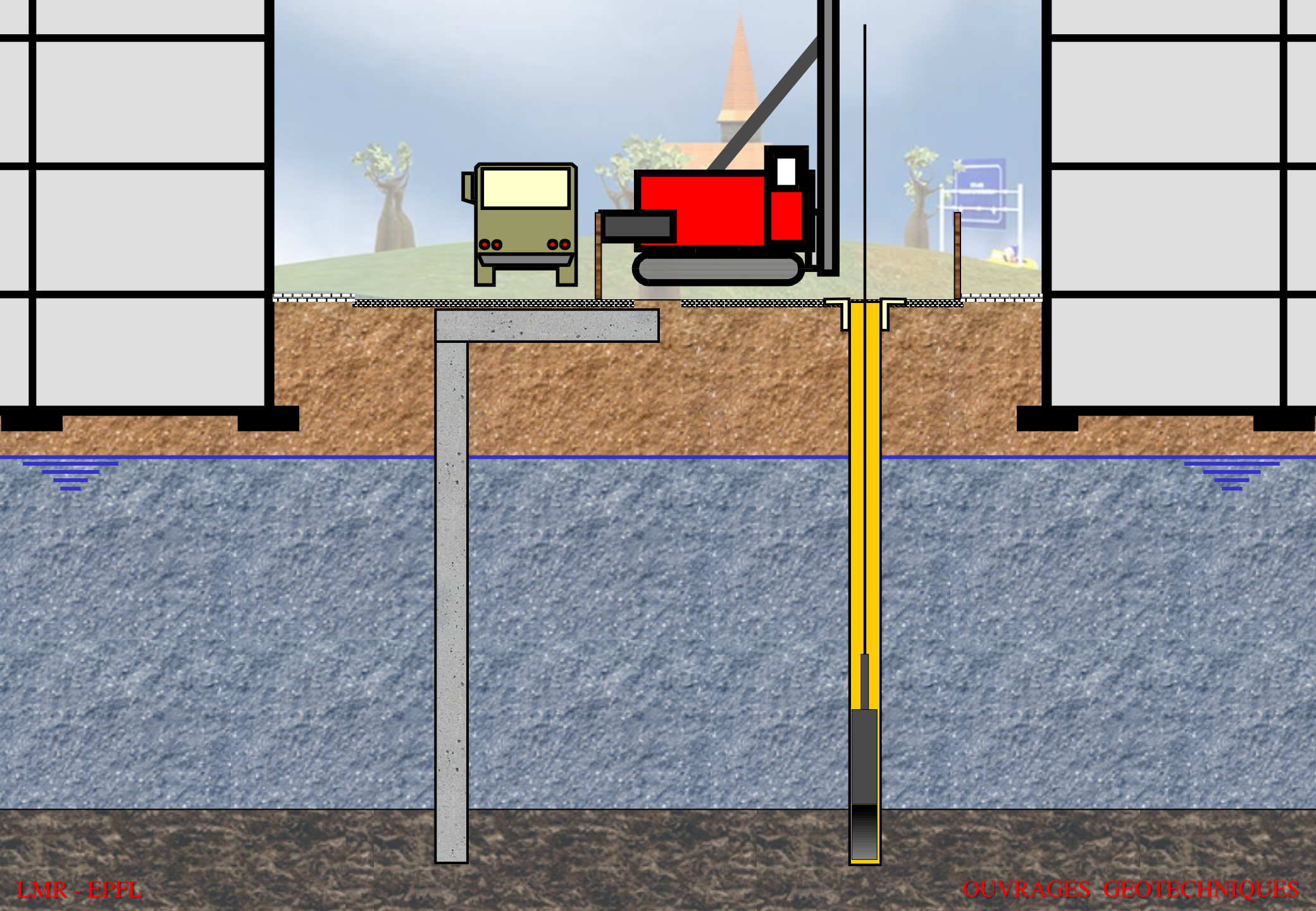


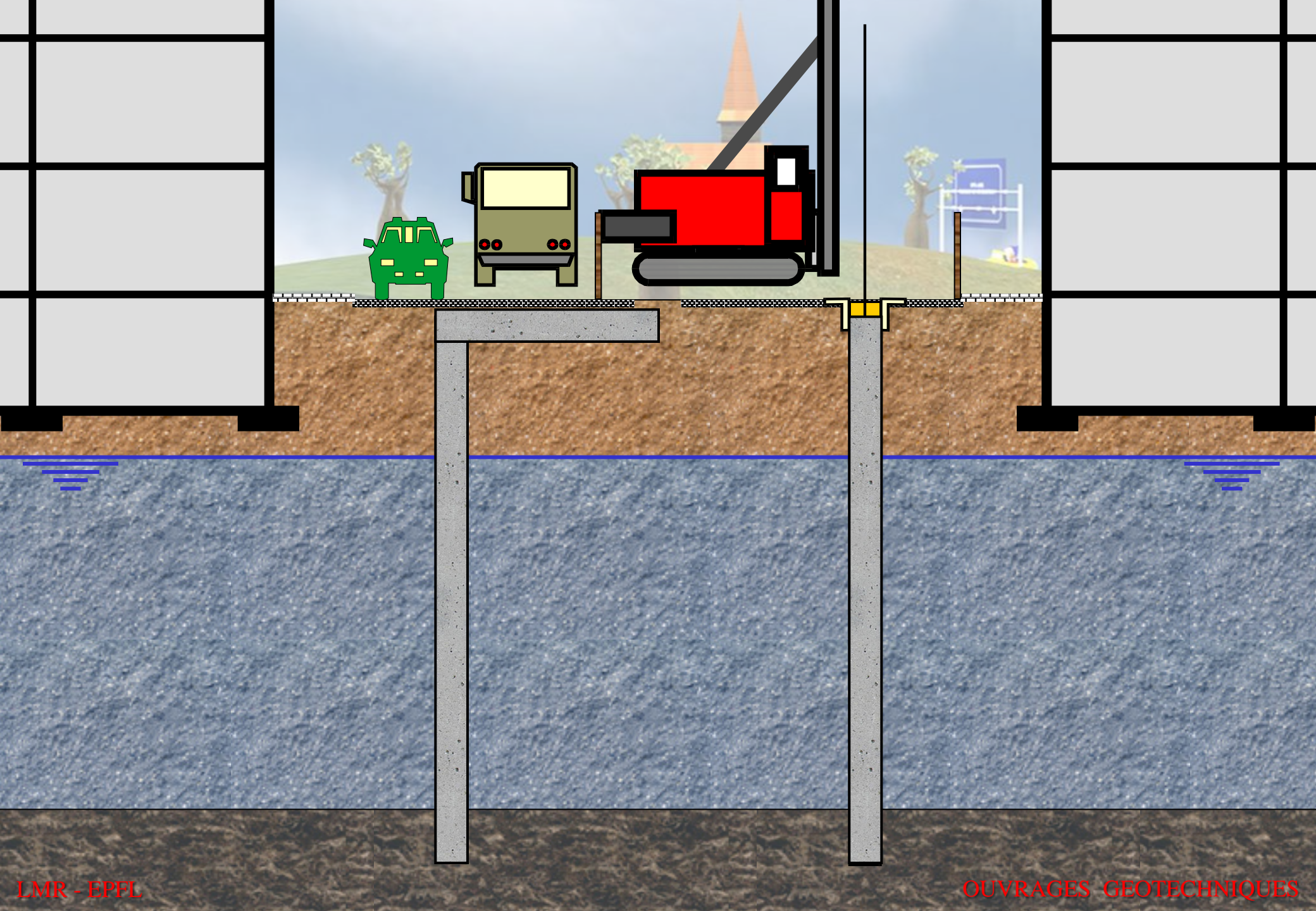


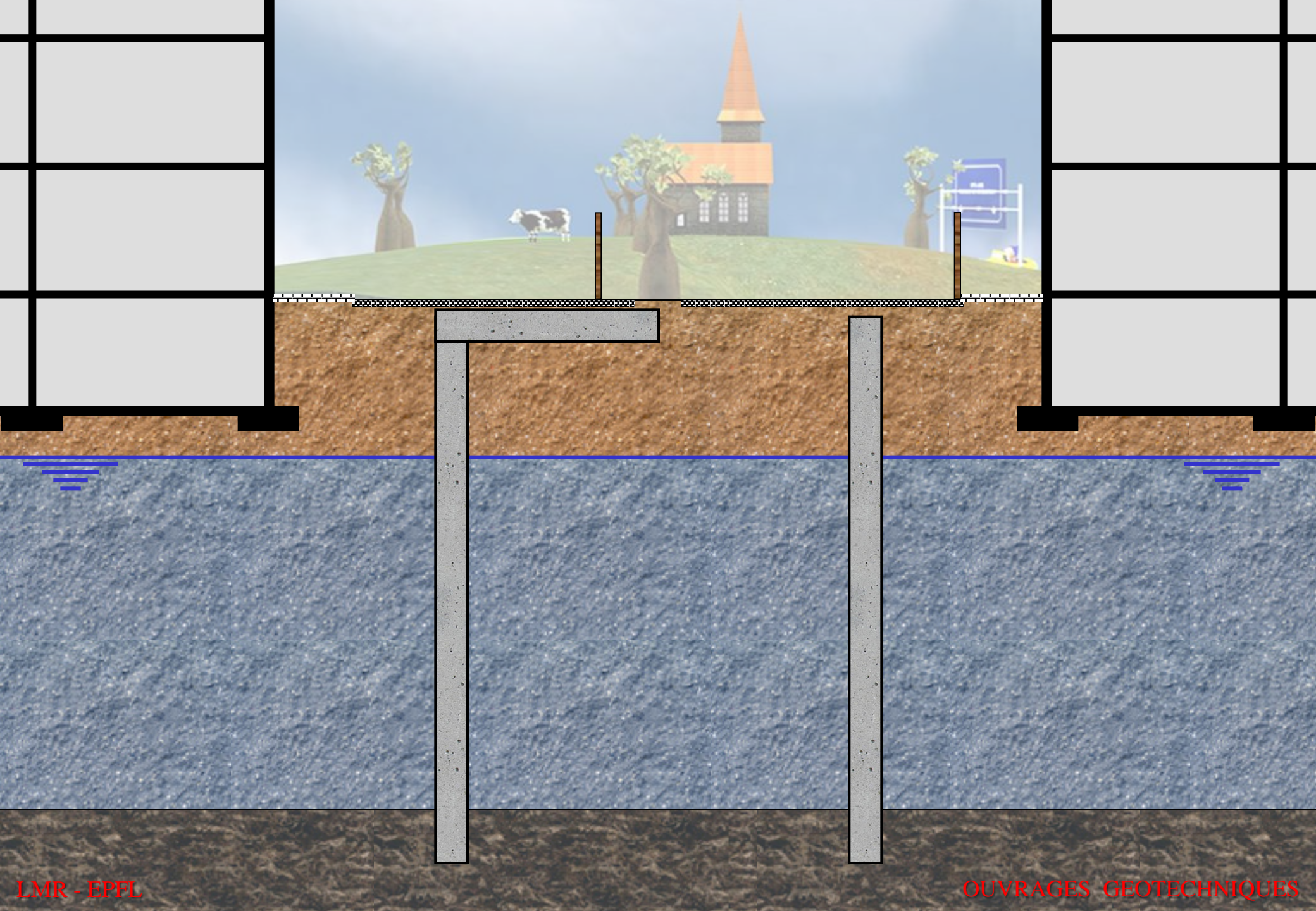


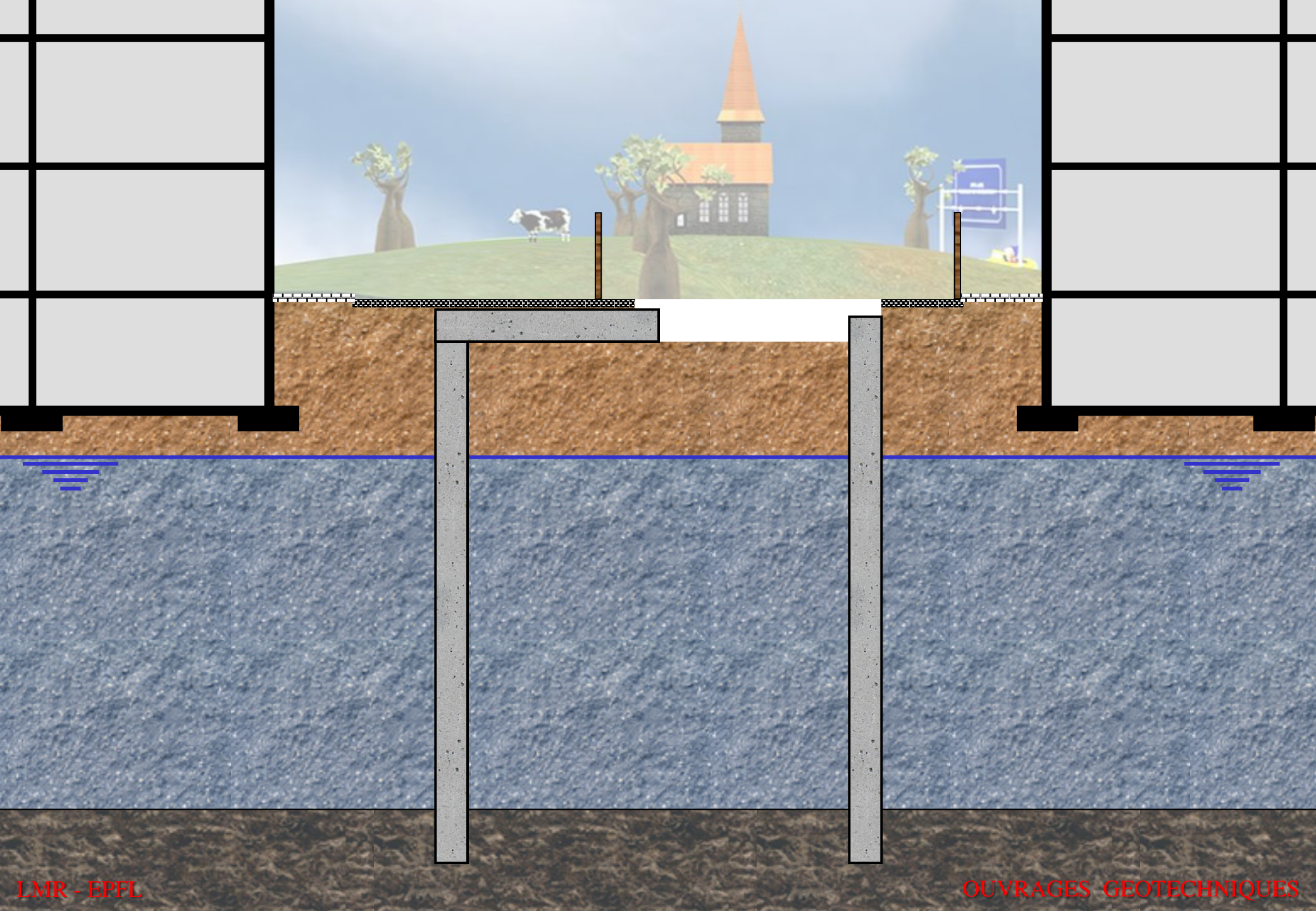


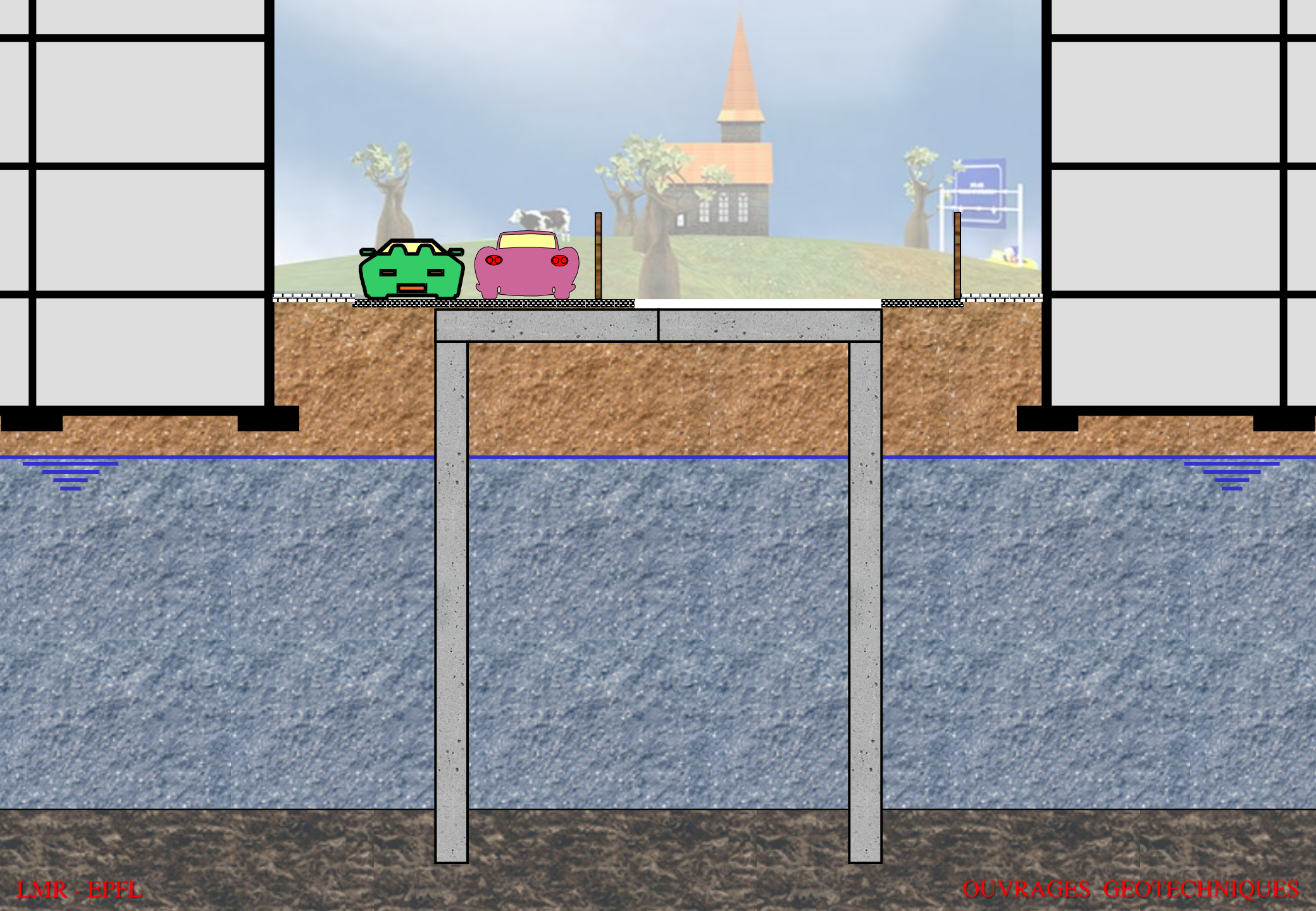










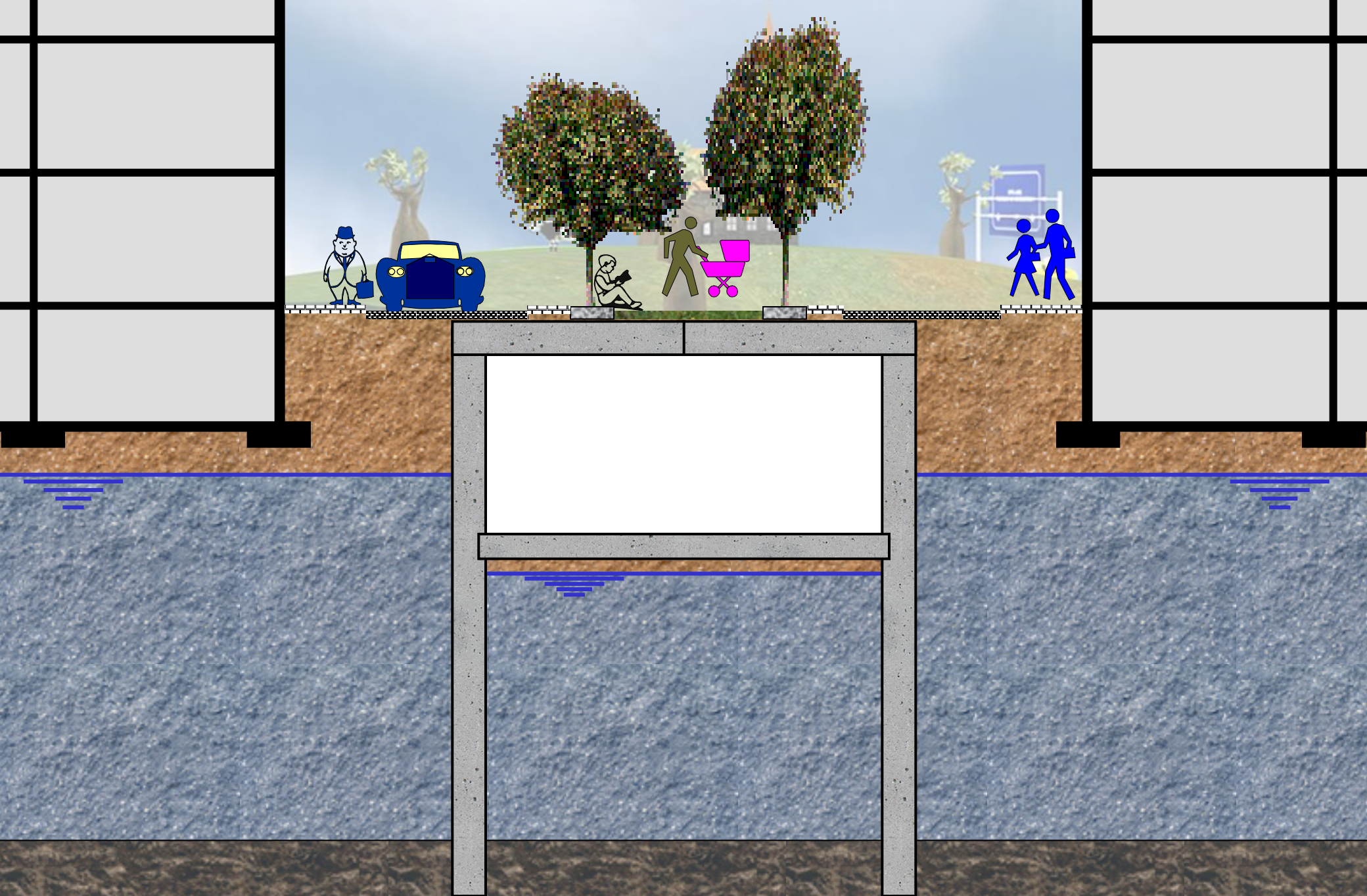


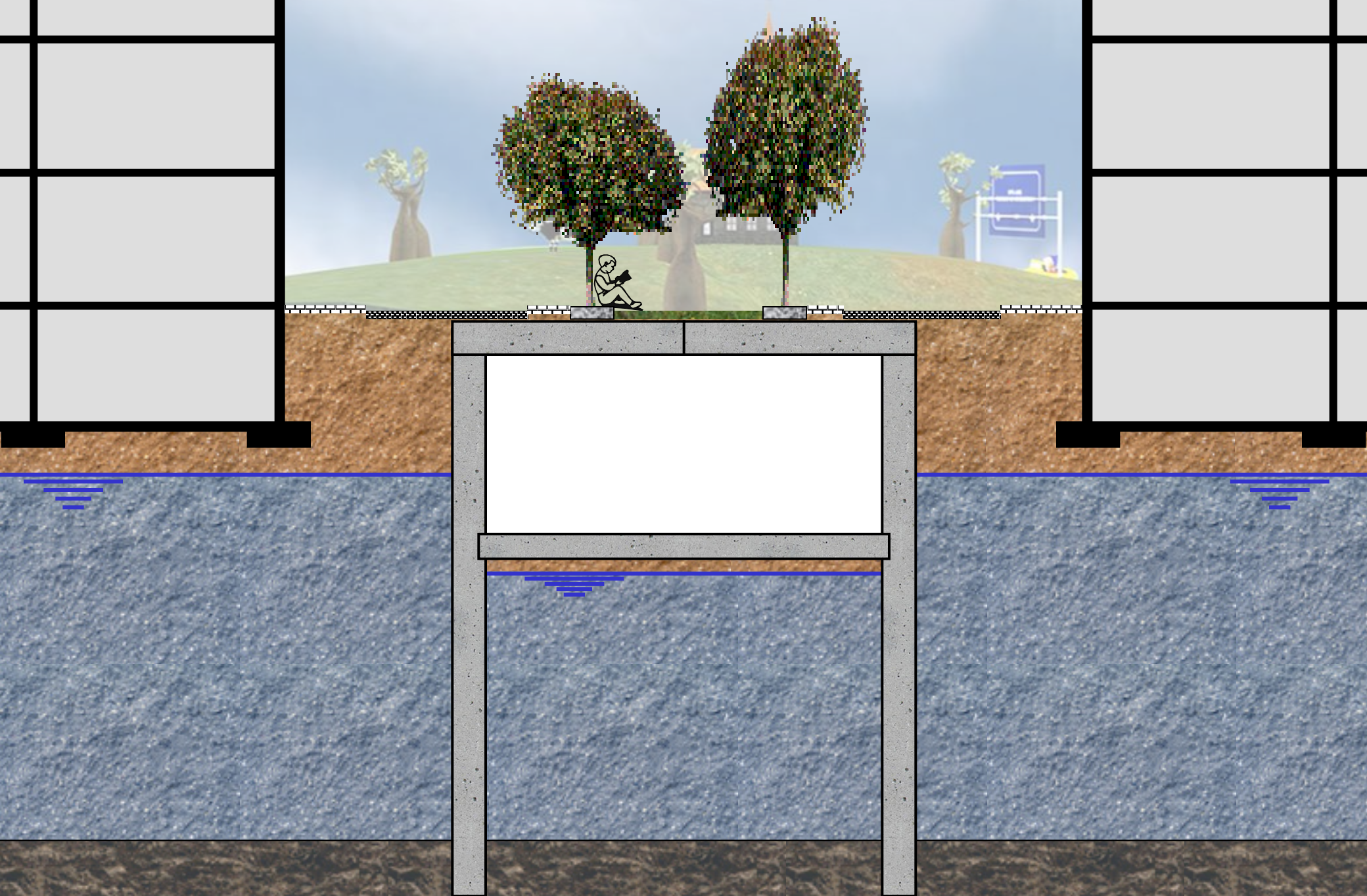


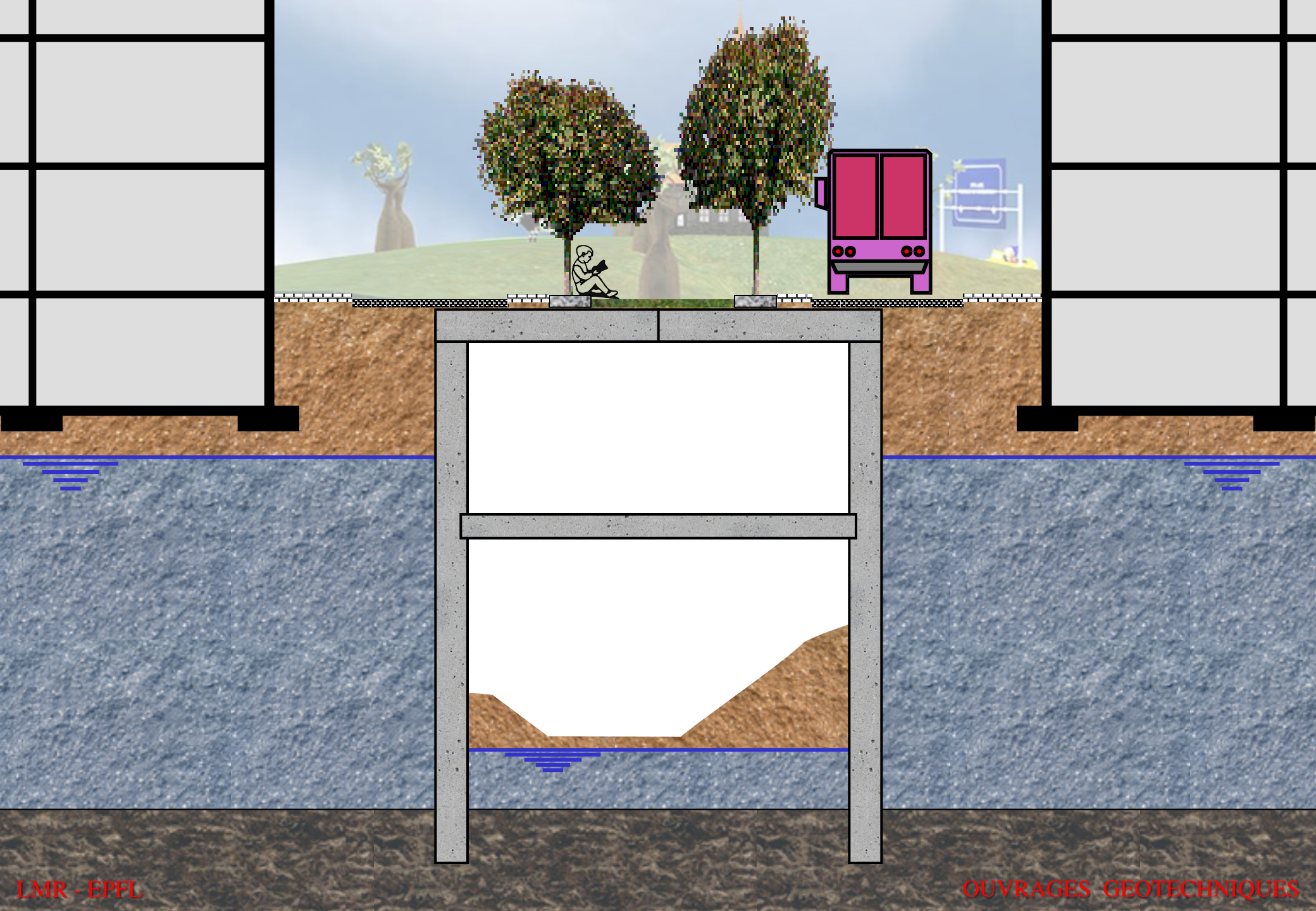


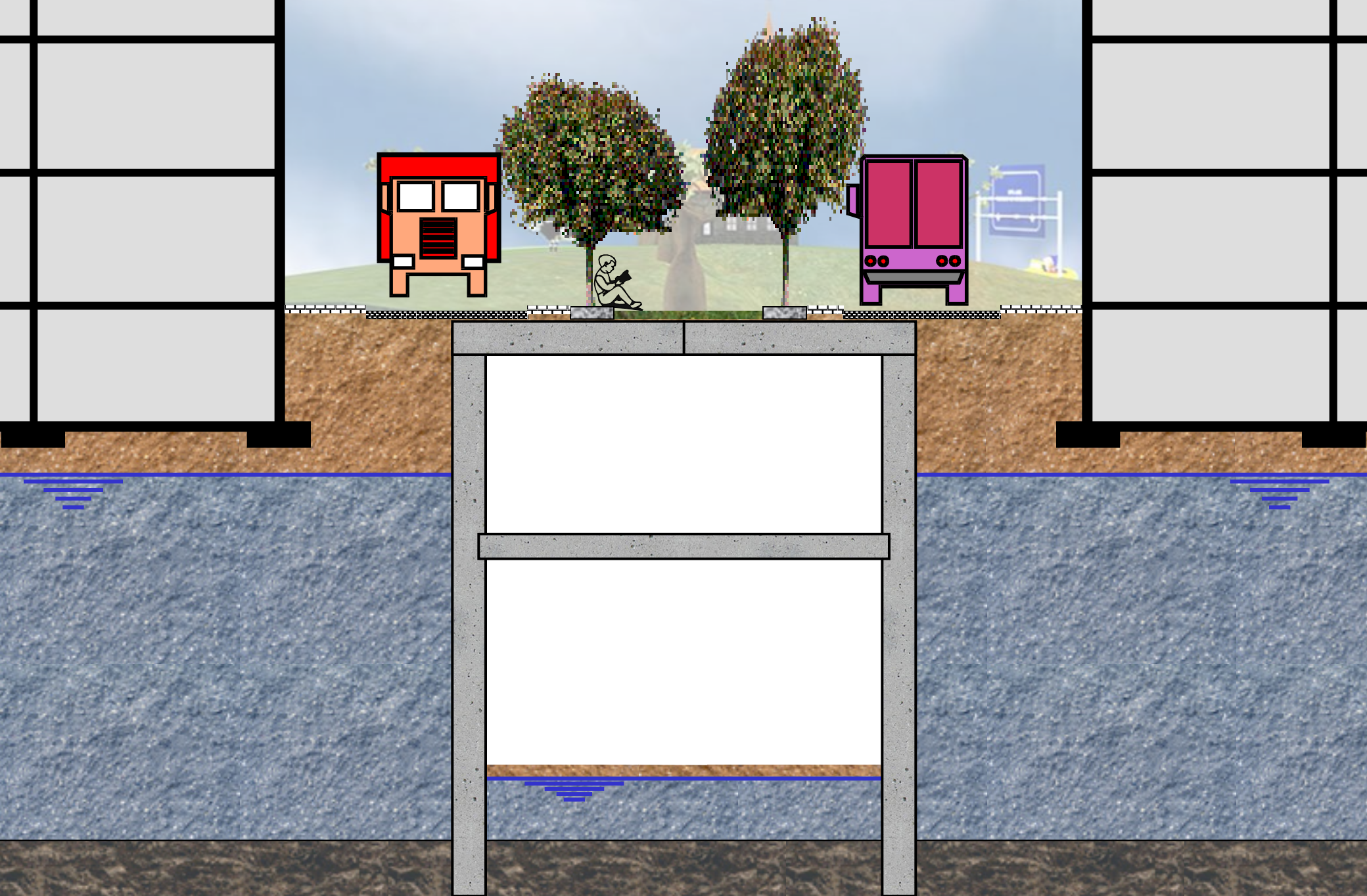


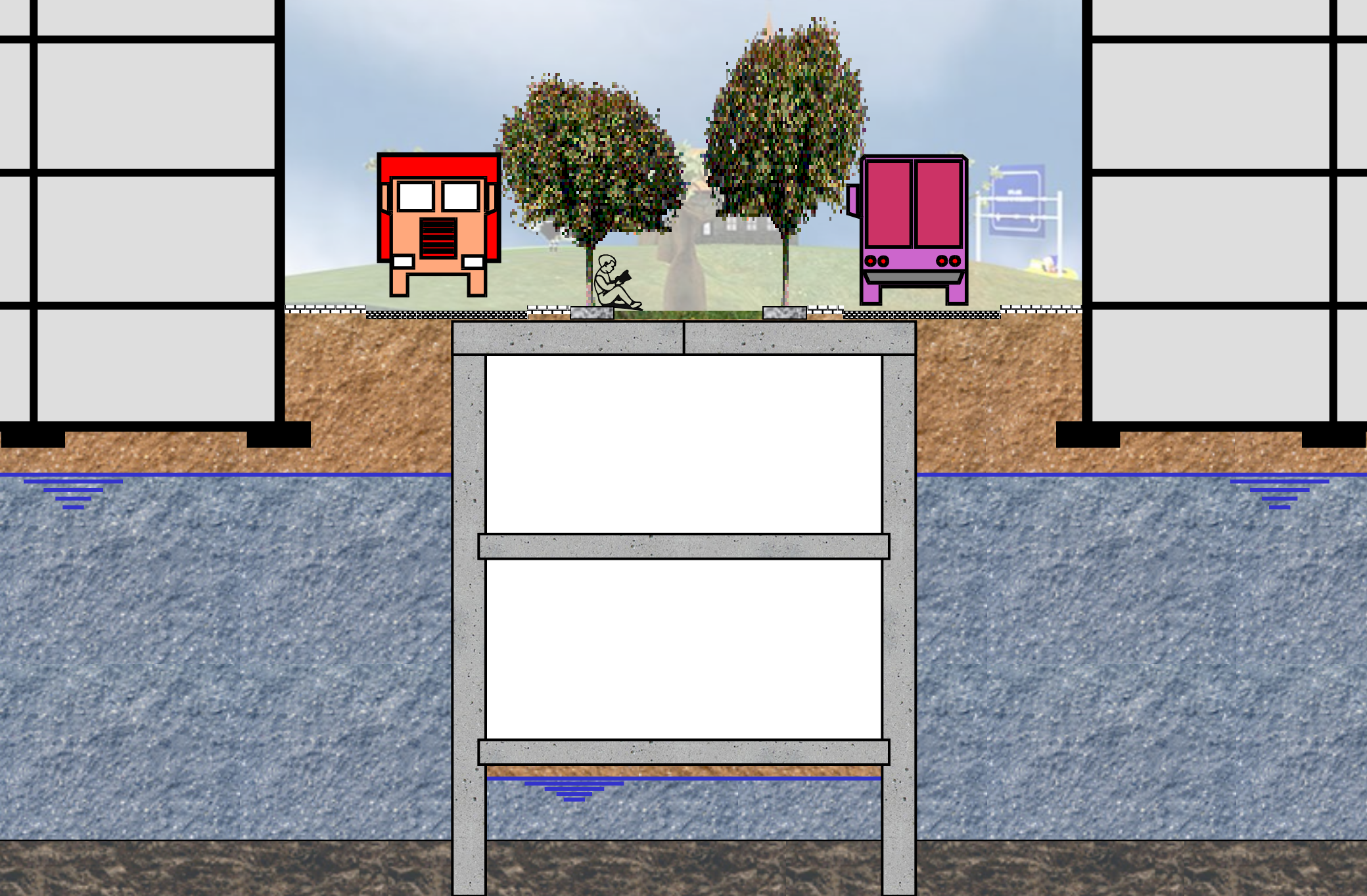


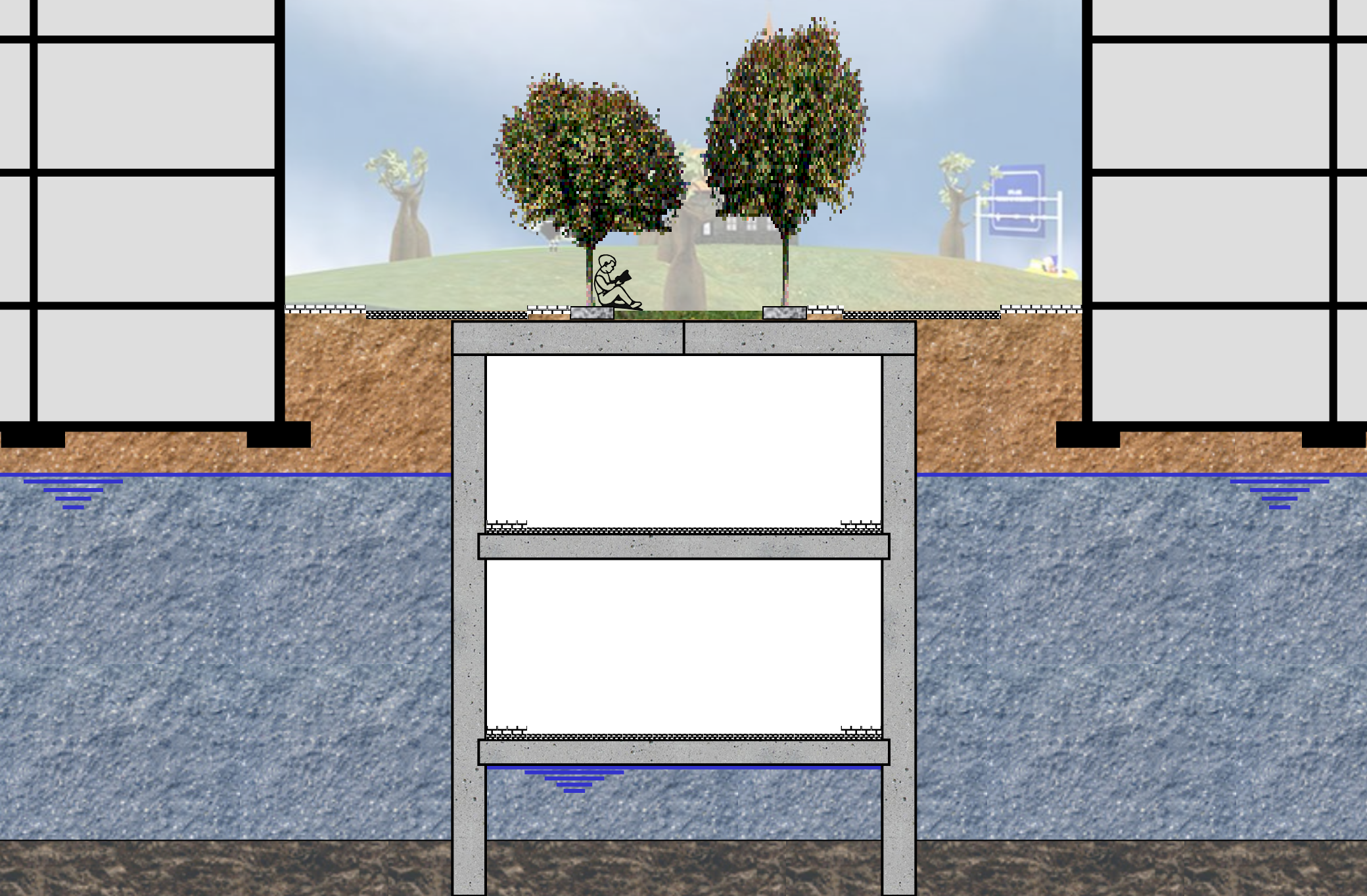


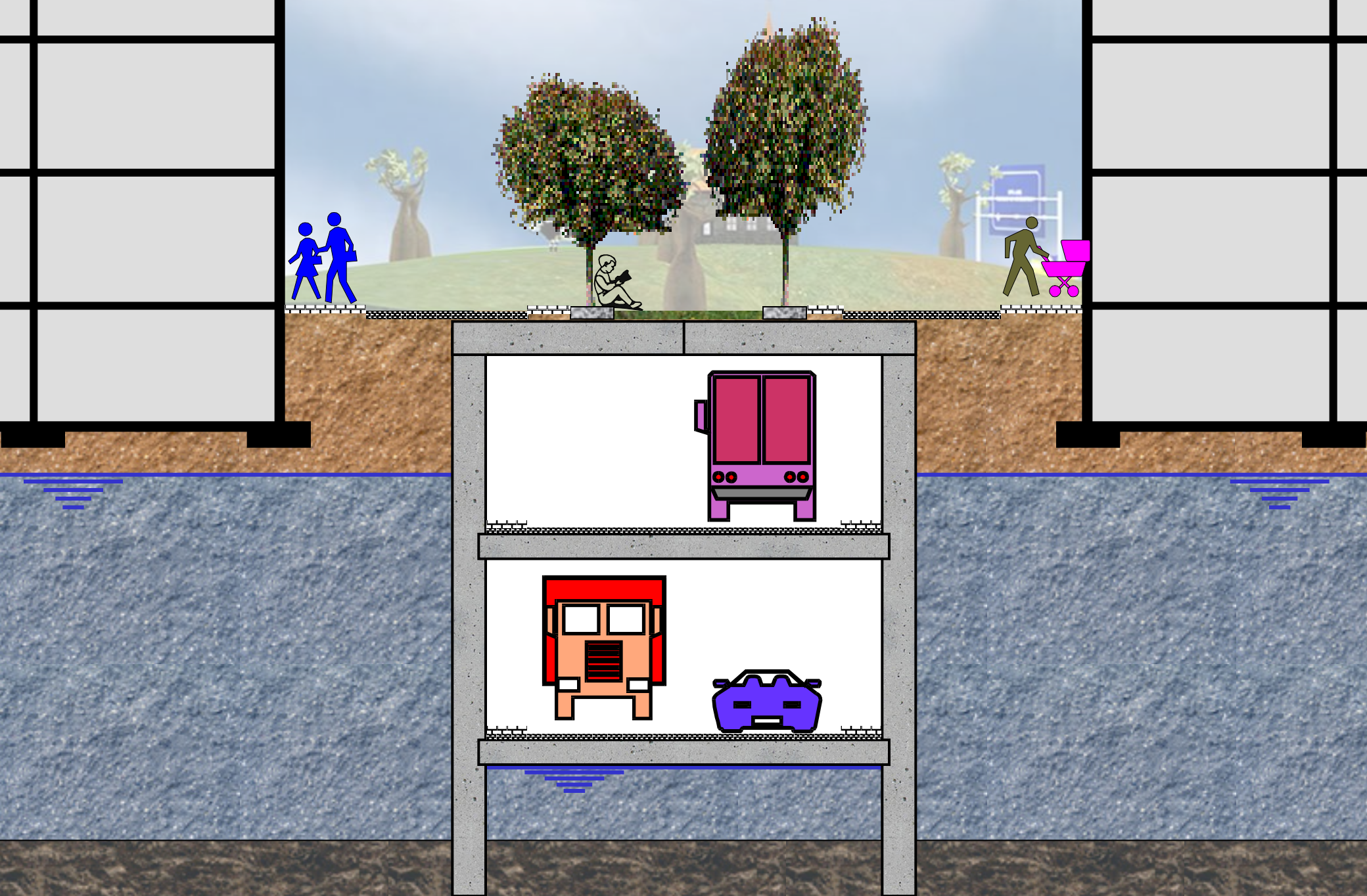














Fin